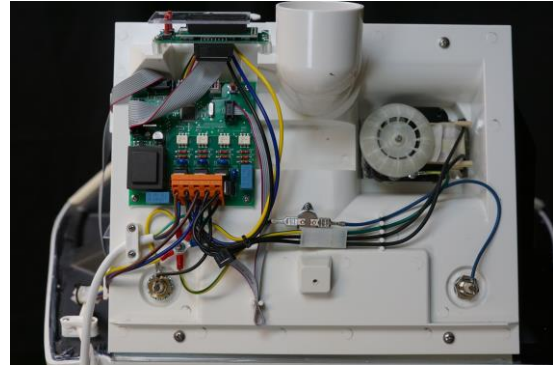
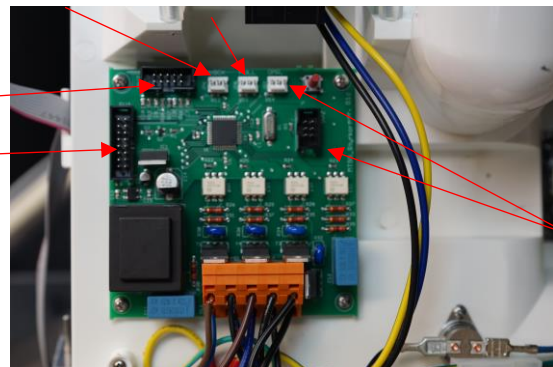


Replace main circuitboard

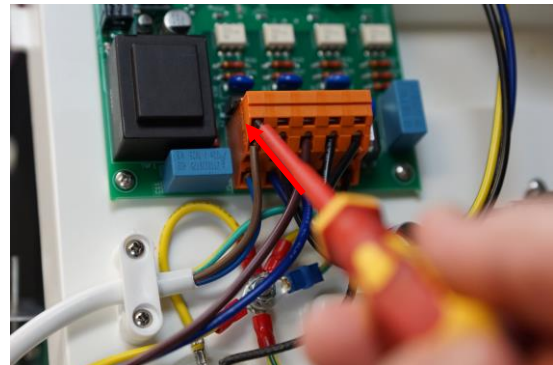
Remove the top part, take a picture of the connections and note the colour combinations on each of the three sensor connections.



Remove all connection cables from the old pcb



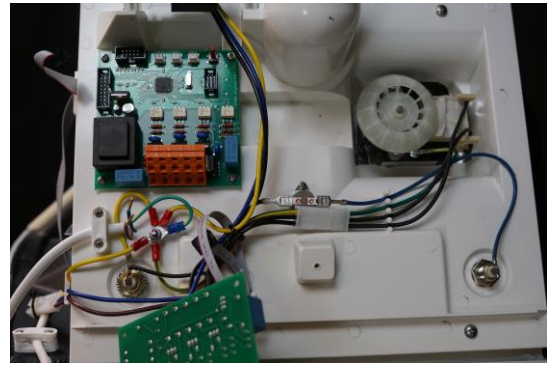
The cables are mounted with quick connection in the orange terminal block. These are loosened and mounted by inserting a small screwdriver into the rectangular hole above each cable and pushing. There is some resistance and need a little force. Start by loosening the brown and blue cable on the far left, in the top and bottom rows.



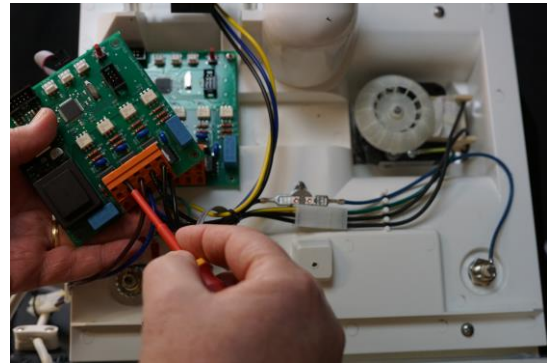
Then loosen the four screws that hold the circuit board in place, fold out the old board so it stays hanging.



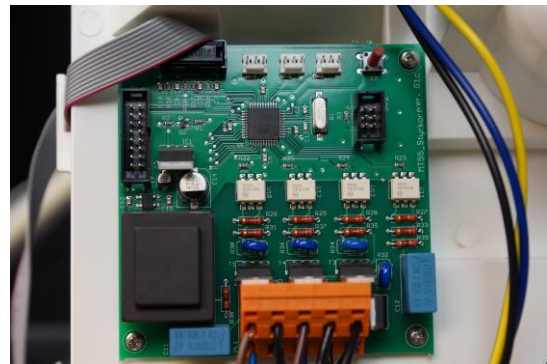
Put the new card in place with the 4 screws. Install the blue and brown cable in the upper and lower rows on the far left of the terminal block.



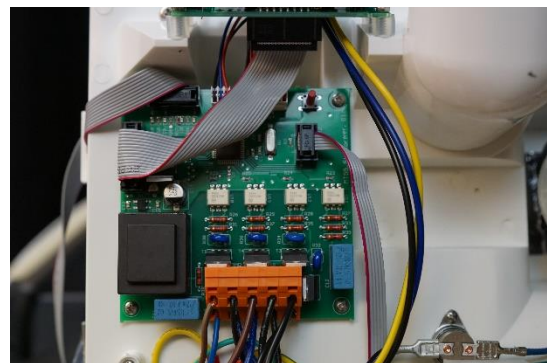
Then disconnect the cables in pairs, one in the upper and one in the lower row in the terminal on the old card. Move to the new circuit board, to the same place.



When this is done, reassemble the connectors to the sensors. Start with the white ones at the top. Check that these match each sensor, the three cables have different colour combinations.



Install the rest of the cables in place.



Start the toilet, make a function test via the service menu on the display.

