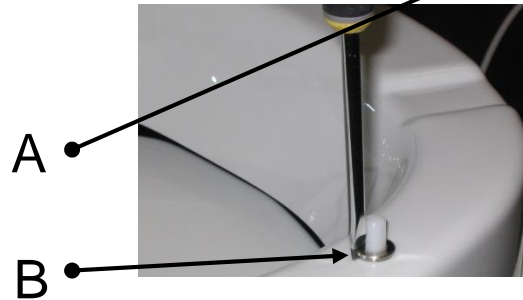


Replace shearpin MullToa 55ai och 65ai

1. Unplug the MullToa.
Disconnect the ventilation pipe



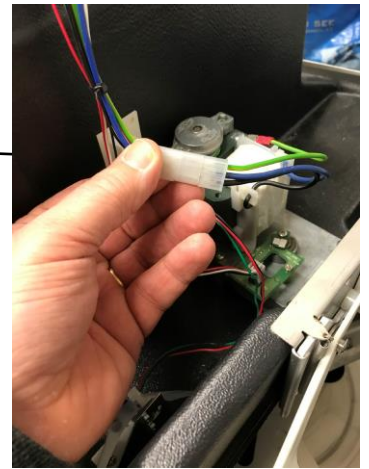
2. Remove the locknut (B)
and the screw (A)



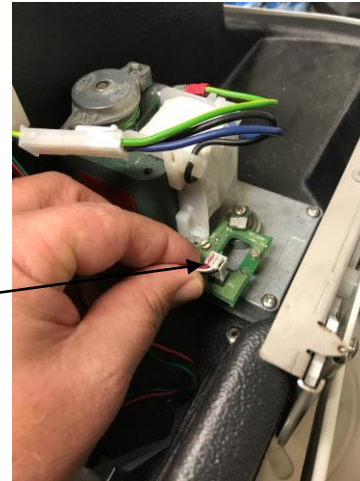
3. Remove the top



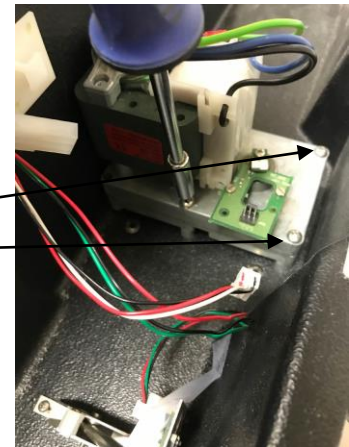
4. Disconnect the quick connector to the motor.



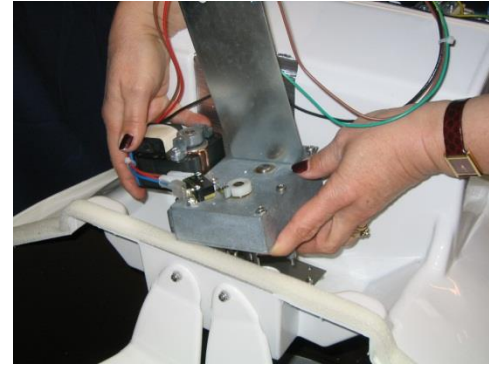
5. Disconnect the connector in the PCB card on the motor.



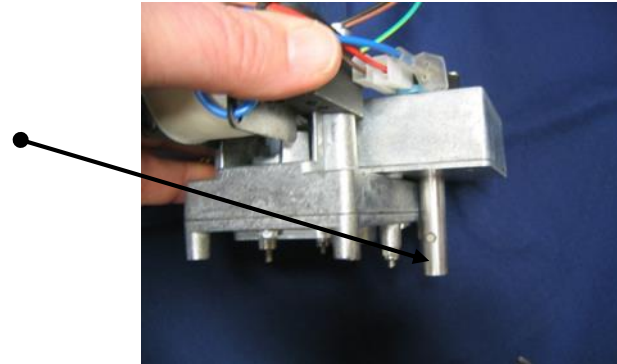
6. Remove the mixing motor assembly by removing the 4 screws holding it in place



7. Remove the motor assembly.



8. Check the shearpin.



9. Remove the rest of the old shear pin, use a hammer and make sure that the axle have a solid ground when you work.



10. Put in a new shear pin. Hit the pin through and make sure that its equally on each side of the axle
- 11 Put the motor back and make sure that the bottom rake have correct position before mounting the motor..
12. Put back the cable to the pcb. Make sure that it is sitting correctly in the holder.
13. Put together the quickconnector for power
14. Put the top part back

